

SIDR-UEVE: data management in Life Sciences

*University of Evry
Val d'Essonne
(UEVE)*



Partners

*Institute for Scientific and
Technical Information
(INIST-CNRS)*



Genopole®: First French Biopark



SUCCEED TOGETHER IN BIOTECHNOLOGY



*Sharing expertise,
skills and resources*

- ❖ **Genopole is the first French Biopark dedicated to « Omics » sciences**
- ❖ **Genopole is composed of:**
 - ❖ **21 academic laboratories**
 - ❖ **67 private biotech companies**
 - ❖ **15 technological platforms and equipments**

Shared Infrastructures



SUCCEED TOGETHER IN BIOTECHNOLOGY

11 Platforms

- ❖ CERFE (animal facility)
- ❖ Bioinformatic annotation
- ❖ Imaging and cytometry platform
- ❖ **Mass spectrometry platform**
- ❖ Evr@Platform (augmented reality and virtual environment)
- ❖ Plant DNA microarray platform
- ❖ Biophotonics platform
- ❖ Surface functionalization platform
- ❖ **Structural biology platform (NMR, AFM)**
- ❖ DNA and cells bank
- ❖ High throughput screening platform

4 Equipments

- ❖ Transmission electron microscopy
- ❖ Cell sorting station
- ❖ Cell irradiator
- ❖ Incubator shared equipments

Technology platform: Assembly of equipment and human resources in a single location, offering the user community access to high-level technological facilities

ss technology platforms <<< 86,321 m2 <<< 2,184 direct jobs

Access Map | Intranet | Directory

NEWSLETTER Contact us

genopole

succeed together in biotechnology

About Genopole® | The biopark | Genopole® services | News | Understanding | Press | Job opportunities

Home > Genopole® services > Collaborative facilities and Service platforms

Collaborative facilities and Service platforms

The Genopole® campus features 19 technology platforms and technical facilities - most of which are open to the biopark's scientific and business communities.

This infrastructure has been established thanks to steadfast financial support from Genopole®'s usual partners (the Ministry for Higher Education and Research, Ile-de-France Regional Council, Essonne County Council, the Regional Directorate for Industry, Research and the Environment (DRIRE), the Essonne Chamber of Commerce and Industry, the French Muscular Dystrophy Association, the University of Evry-Val d'Essonne, the CEA, the INSERM and the CNRS), as well as additional contributions from the Ecole Nationale Supérieure des Mines de Paris, Armines and the Paris VI and Paris XIII universities.

The Genopole® Infrastructure team is committed to responding to requests for new facilities and promoting the development, accreditation and operation of existing ones.

17 technology platforms :

A technology platform is defined here as the assembly of equipment and human resources in a single location, with a view to offering the user community access to high-level technological resources.

2 national facilities:

- the DNA and Cell Bank
- the Plant DNA Microarray Platform

14 technology platforms:

- the MicroScope platform
- the EVR@ platform (Virtual Environment and @ugmented Reality)
- the Imaging & Cytometry Platform
- the HTS Platform
- the Mass Spectrometry Platform
- the Center for Exploration and Experimental Functional Research (CERFE)
- the Biophotonics Platform
- the Structural Biology Platform
- the Cell Sorting Workstation
- the Cell Irradiator
- the Transmission Electron Microscopy
- the Center for Functional Investigation and Experimental Research in Amphibians and Fish (CERFAP)

Real estate and business accommodation

Collaborative facilities and Service platforms

Joint services

Reinforcing skills

Scientific events

International development

Marketing and public relations

Print

Blasdyler

Latest News

La science se fête près de chez vous à (...) PDF

Désireux de favoriser l'information citoyenne, (...) PDF

Global Bioenergies succeeds in creating a (...) PDF

Global Bioenergies, located on the Genopole (...) PDF

Locometrix® Feedback Training pour une récupération PDF

Locometrix Feedback training, nouveau (...) PDF

BSI merge with Microbioships Biosystems International (BSI), société de (...) PDF

NEWSLETTER

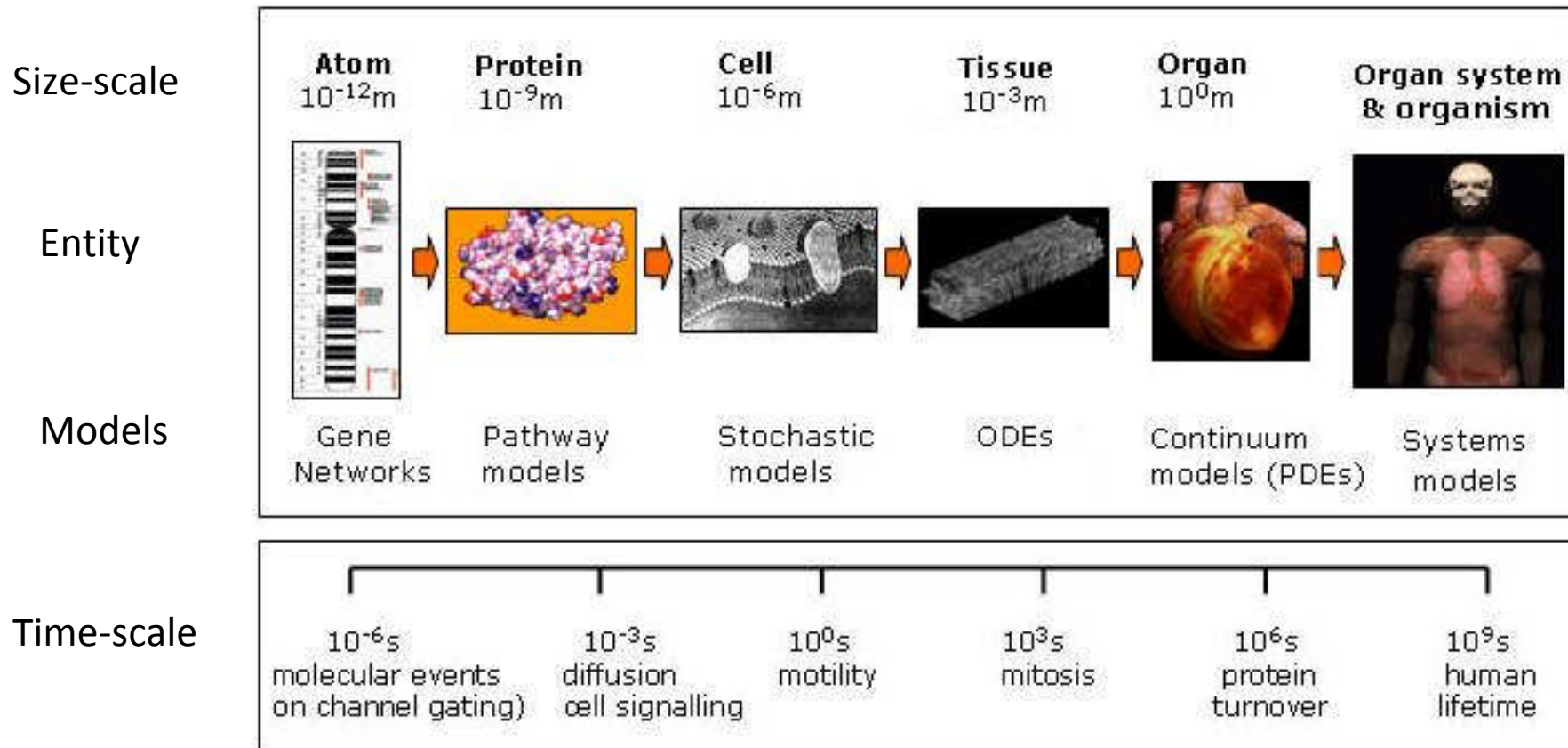
Keep up to date with our latest news... Click here

Interactive map

Download

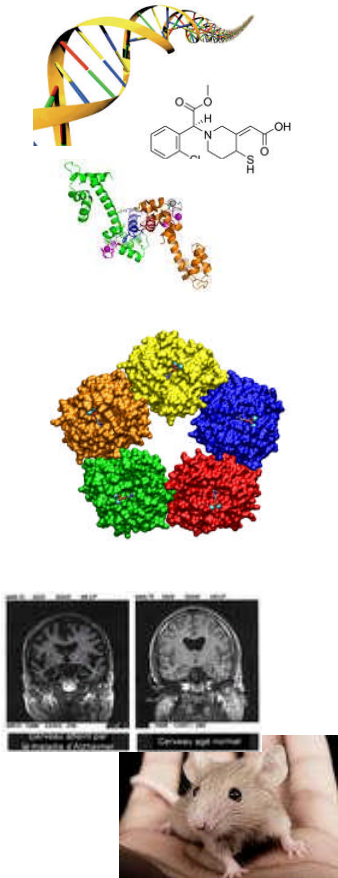
The Systems Biology era:

How to integrate complex data from multiple experimental sources to understand the functioning of biological systems ?



Experimental characterization

Biological entities



Molecules: DNA, RNA, proteins, sugars, metabolites, lipids, ...

Molecular interactions: protein-protein interactions, DNA-protein interactions, ...

Phenotypes: cells, organs, organisms, species, ...

Technologies

DNA sequencing, RNA sequencing, SNP array, DNA array, Chromatography, **Mass spectrometry, Nuclear Magnetic Resonance**, Two dimensional-gel, ...

Protein arrays, ChIP-chip with DNA or tiling array, NMR ...

Cell phenotype: Cellular microarray, FACS, ...

Whole phenotype: Gene knock-out, RNAi